

## SETTING UP A DW SPECTRUM® EDGE SERVER on **MEGAPIX® Ai CAAS™**

Camera as a System with Next-Generation Video Analytics

Applies to the following MEGApix® Ai CaaS™ models		
DWC-XSBxxxC models	DWC-XSDxxxC models	DWC-XSTxxxC models

### A. BEFORE YOU START

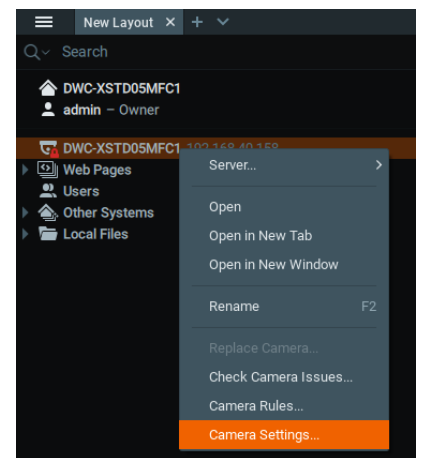
- Verify the camera's firmware and Edge Server versions are up to date.
  - Go to <https://digital-watchdog.com/downloads> and search by your product's model number.
  - The camera's firmware can be updated from the camera's web GUI or DW's IP Finder™ software.
  - The camera's edge version can be updated from the camera's web GUI under SETUP > EDGE > DW Spectrum EDGE.
- Make sure the camera's date and time are set up correctly.
  - On the camera's web GUI, go to SETUP > SYSTEM > DATE/TIME SETTING.
- If the camera does not have stable network access, it is recommended to turn off the time sync feature.
  - Go to the camera's web GUI, go to SETUP > SYSTEM > DATE/TIME SETTING, and turn off time synchronization.
- Write down the camera's serial number and product model number, as well as record the license key before mounting the camera.
- MEGApix CaaS cameras run the DW Spectrum Edge server version and come with 1 DW Spectrum Edge license preloaded.

### B. FINDING YOUR DW SPECTRUM® CAAS™ CAMERA/SERVER

- STEP 1:** Launch the DW Spectrum IPVMS client on a computer on the same network as the DW CaaS edge server. It is not recommended to try to merge CaaS edge servers from different networks.
- STEP 2:** If the CaaS edge server is not showing, click the "Connect to Another Server..." button at the bottom of the screen.
- STEP 3:** Enter the CaaS edge server's IP address, port (default is 7001), username and password. You may test the connection or click OK to log into the CaaS edge server.

### C. AUTHENTICATE CAMERA AND RECORD

- STEP 1:** Right-click on the CaaS edge server from the resource tree, then click "Camera Settings."
- STEP 2:** From the General tab, click **Edit Credentials** and type in the camera's password. Click OK to save the credential.  
 \* If the red lock on the camera icon is still shown, check the camera's password and retry STEP2.
- STEP 3:** Go to the Recording tab.
- STEP 4:** Click **Recording**  to turn on the recording. **Recording**
- STEP 5:** Configure schedule settings for quality, FPS and recording type.
- STEP 6:** Click and drag the mouse cursor over the recording schedule to apply the settings to multiple days and hours.
- STEP 7:** A red dot will appear next to the camera in the resource tree when the recording is on.



**NOTE:** You can install up to 30 DW Spectrum CaaS servers on the same system/network (DW Spectrum gen 5 or higher). It is not recommended to merge a CaaS camera acting as a Server with a regular DW Spectrum Server.

**NOTE:** This document is intended to serve as a quick reference for the initial setup. See the DW Spectrum IPVMS manual for more information on features and functionality.