

BOX CONTENT

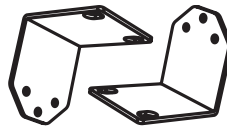
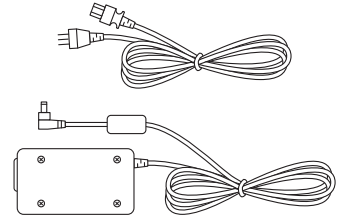
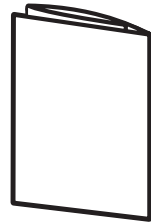


| 4-channel NVR | 8-channel NVR | 16-channel NVR |
|---------------|---------------|----------------|
| DW-COVA4 | DW-COVA8 | DW-COVA16 |

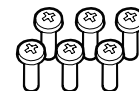
NOTE: Download all your support materials and tools in one place.

NOTE: Please see the full product manual for web viewer setup, functions and camera settings options.

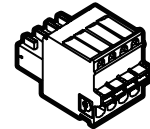
NOTE: This products is covered by one or more claims of the HEVC Patents listed at patentlist.accessadvance.com.



DW-COVA8,
DW-COVA16 only

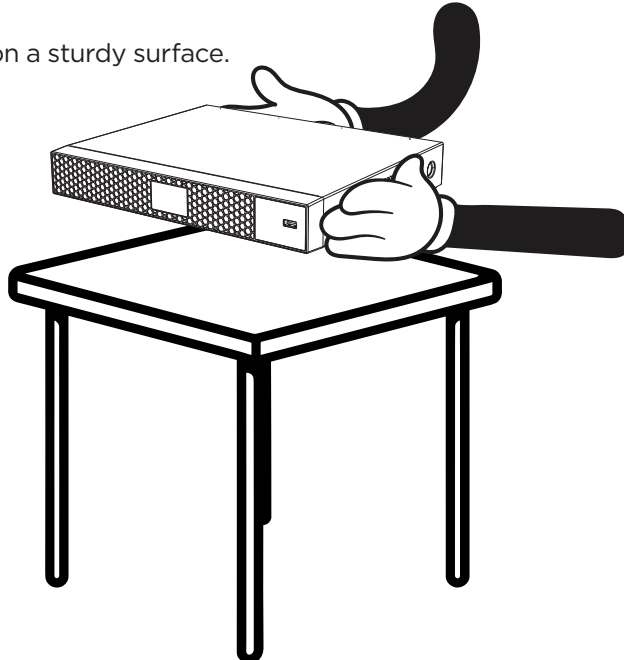


6X PWM3x6mm



4x (DW-COVA16)

- 1 Place recorder on a sturdy surface.



SAFETY TIPS



<104°F (40°C).



No direct sunlight.



Dust and moisture-free.



Allow ventilation.

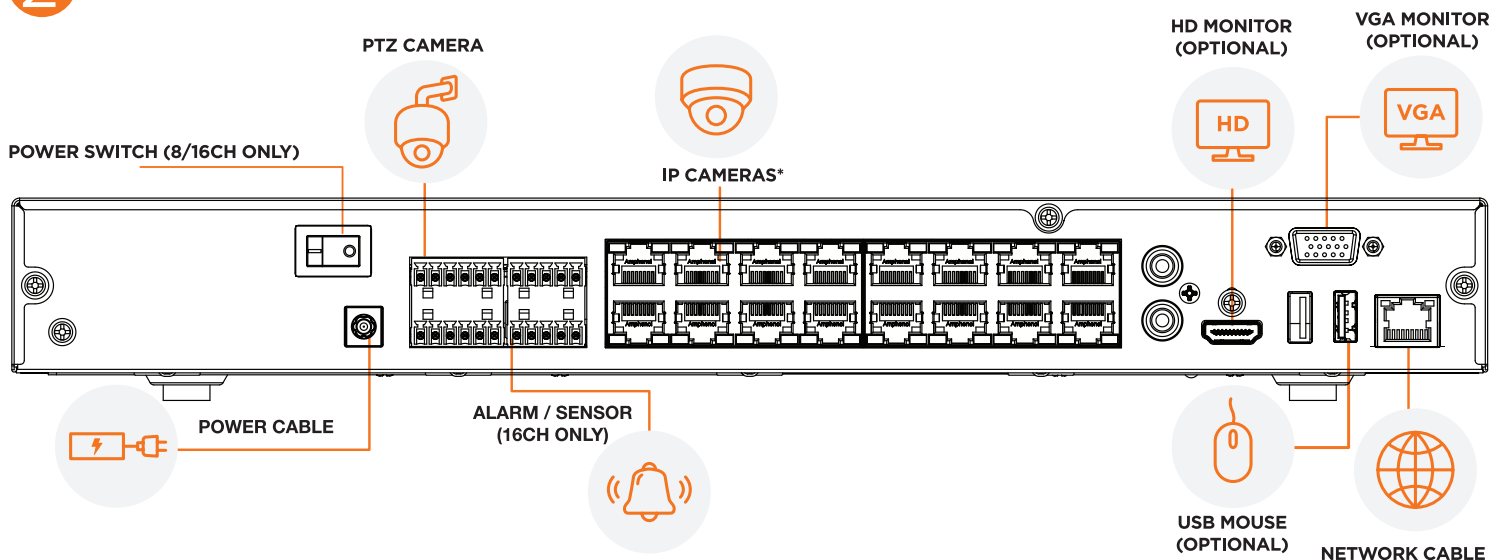


Do not turn off during boot-up.



UPS is recommended.

- 2 Connect external devices.



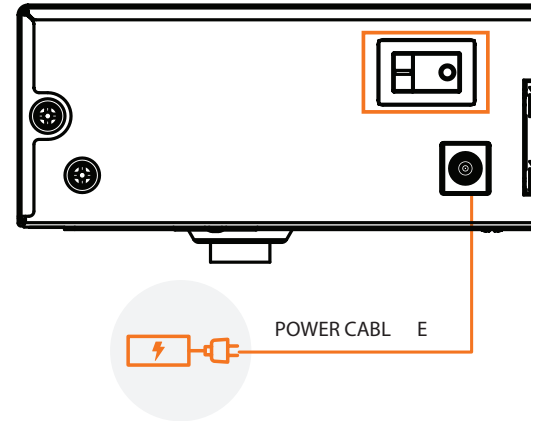


IMPORTANT!! HAVE YOUR MYDW ACCOUNT READY BEFORE PROCEEDING.

A myDW account is required to complete the set up. If you do not have a myDW account, contact your DW sales representative.



- 3 Power the recorder and turn the power switch ON.
NOTE: Power switch available on 8- and 16-channel models.



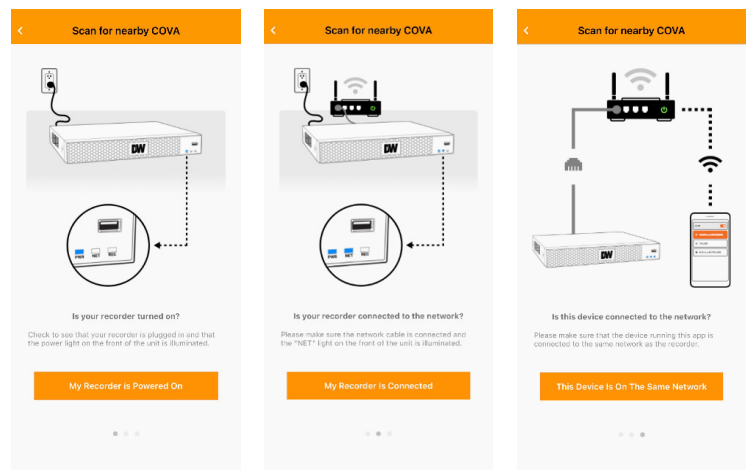
- 4 Follow the setup wizard via:

Locally in the NVR



OR

DW Mobile Plus App (recommended)



Download the app:



Download quick setup guide, manual, IP Finder and firmware here:

